



road to nowhere



Cutting



light grey

Dimensions **Quantity**

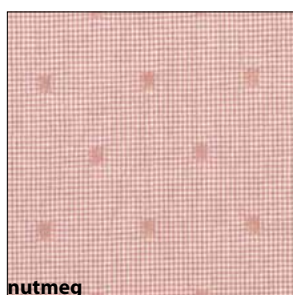
8¼" x 1¼"	2
-----------	---



dark grey

Dimensions **Quantity**

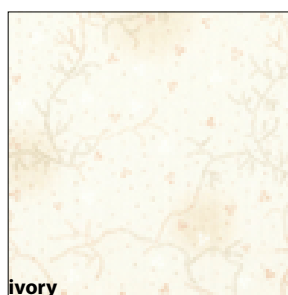
8¼" x ¾"	2
8¼" x 1"	2
11¼" x 2¼"	2
12½" x 1½"	2



nutmeg

Dimensions **Quantity**

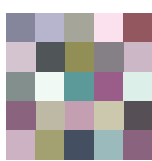
8¼" x 1"	1
8¼" x 1½"	2



ivory

Dimensions **Quantity**

8¼" x ¾"	8
2" x 8"	2
11¼" x 1"	2



carolina patchworks

bloggers' bar hop quiltalong: road to nowhere

carolinapatchworks.com
 Emily Cier ∞ emily@carolinapatchworks.com

Assembly

1. Cut and arrange your center group of strips.
2. Sew the center column using very accurate 1/4" seams.
3. Add the first (ivory) border.
4. Add the second (dark grey) border.

